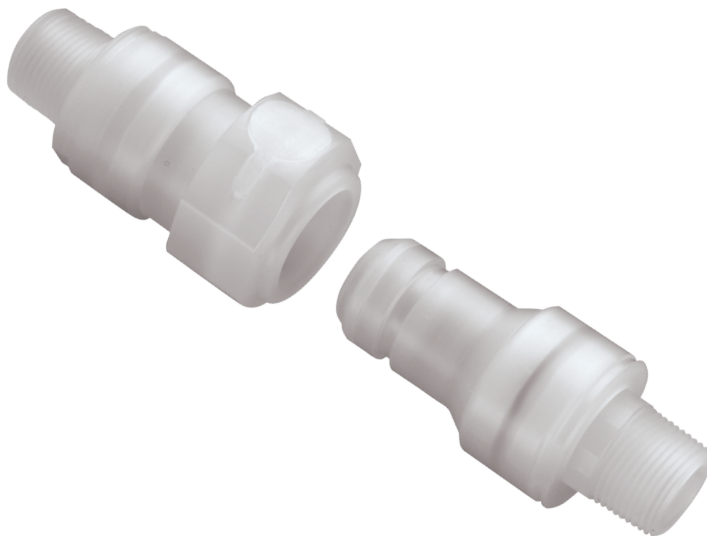


# CQG SERIES CONNECTOR

**The CQG06 Series** high purity couplings feature our patented pressure-balanced, non-spill design. Molded virgin polypropylene and a 100% springless flow path provide broad chemical resistance and exceptionally high flow capacity, allowing instant disconnects (and reconnects), even under pressure.



## SPECIFICATIONS

### PRESSURE:

0 - 80 psig (0 - 5.5 bar)

### TEMPERATURE:

32°F to 150°F (0°C to 66°C)

### MATERIALS:

#### Main components:

Natural, virgin polypropylene

**Seals:** FKM (Simriz® FFKM optional)

**Springs (non-wetted):** Hastelloy® C

**Flare nuts:** PVDF

**Lubricants:** None used

#### Dual Containment Nut and Panel Mount Fitting:

Virgin, natural polypropylene

**Flare nuts:** PVDF

**Panel nuts:** HDPE

**Panel mount o-rings:** FKM

### SPILLAGE/AIR INCLUSION:

<0.1 cc (ml)/disconnect (reconnect)

### PANEL MOUNT: Optional adapter kit

### TUBING SIZES:

3/8" to 3/4" flare; 3/8" to 3/4" NPT

WARNING: Pressure, temperature, chemicals, and operating environment can affect the performance of couplings. It is the customer's responsibility to test the suitability of CPC's products in their own application conditions.

### FEATURES

Non-spill design



### BENEFITS

Ultimate protection from chemicals and fumes

Pressure-balanced



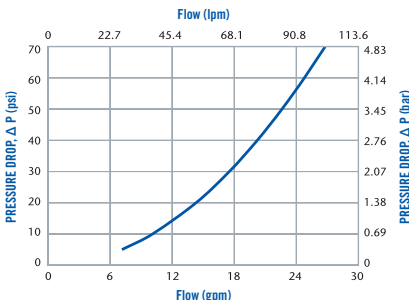
Easy to reconnect at high pressure

Springless flow path design

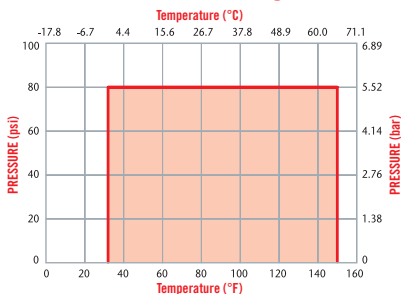


Eliminates source of metallic contaminants

CQG06 WATER FLOW



CQG06 Pressure Range



These graphs are intended to give you a general idea of the performance capabilities of each product line. The shaded area of each graph represents the operating range of the product family, i.e., upper and lower values are shown. Therefore, depending on the exact coupling configurations selected, you can reasonably expect values to fall within the shaded area.

## NOTE

See page 139 for ChemQuik Dual Containment Nut options.



cpcworldwide.com/CQG



**COLDER PRODUCTS COMPANY**  
U.S.A.  
PHONE: +1 (651) 645-0091  
FAX: +1 (651) 645-5404  
TOLL FREE: +1 (800) 444-2474  
E-MAIL: info@cpcworldwide.com

**COLDER PRODUCTS COMPANY GMBH**  
Germany  
E-MAIL: cpcgmbh@cpcworldwide.com

**DOVER (SHANGHAI) INDUSTRIAL CO., LTD**  
ShangHai, China  
PHONE: +86 21 2411 2666  
TOLL FREE: +86 400 990 1978  
E-MAIL: asiapacific@cpcworldwide.com

# CQG SERIES DIMENSIONS

## COUPLING BODIES - Polypropylene

TERMINATION	TUBING/THREAD SIZE	TERMINATION TYPE	SHUTOFF	A	B	C
IN-LINE	3/8" OD	Flare compression	CQGD06100106	1.96 (49.8)	4.21 (106.9)	1 (25.4)
	1/2" OD	Flare compression	CQGD06100108	1.96 (49.8)	4.42 (112.3)	
	3/4" OD	Flare compression	CQGD06100112	1.96 (49.8)	4.49 (114.0)	
	1/2" Taper	Male NPT	CQGD06100208	1.96 (49.8)	3.81 (96.8)	

## COUPLING INSERTS - Polypropylene

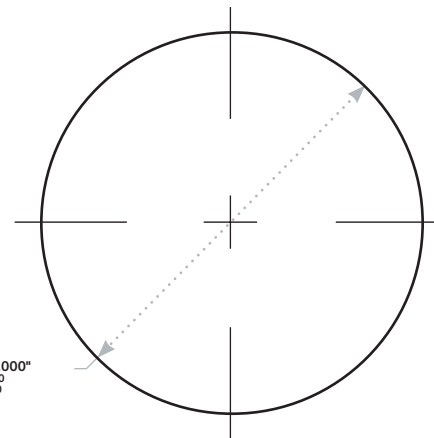
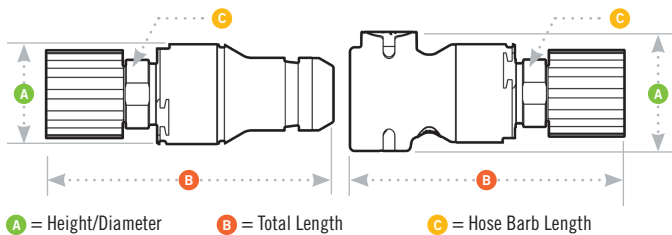
TERMINATION	TUBING/THREAD SIZE	TERMINATION TYPE	SHUTOFF	A	B	C
IN-LINE	3/8" OD	Flare compression	CQGD06200106	1.62 (41.1)	4.35 (110.5)	1 (25.4)
	1/2" OD	Flare compression	CQGD06200108	1.62 (41.1)	4.45 (113.0)	1 (25.4)
	3/4" OD	Flare compression	CQGD06200112	1.62 (41.1)	4.63 (117.6)	1 (25.4)
	3/8" Taper	Male NPT	CQGD06200206‡	1.62 (41.1)	3.81 (96.8)	
	1/2" Taper	Male NPT	CQGD06200208	1.62 (41.1)	3.95 (100.3)	
	3/4" Taper	Male NPT	CQGD06200212‡	1.62 (41.1)	4.15 (105.4)	

## PANEL MOUNT ADAPTOR - Polyethylene

DESCRIPTION	PART NO.
Panel mount adaptor kit (fits both bodies & inserts)	

All measurements are in inches (millimeters) unless otherwise noted. Tubing must meet stated inside and outside diameters.

## PRODUCT DIMENSIONS



## PANEL DIMENSIONS

	PANEL OPENING	PANEL THICKNESS MAX.-MIN.
COUPLING BODIES OR INSERTS	see drawing	0.50 – 0.12

## CHEMQUIK® DUAL CONTAINMENT FLARE NUTS - Polypropylene



**The ChemQuik® Dual Containment System** is an easy way to "double contain" critical chemical lines, protecting plant and personnel in case a primary process line ruptures or "sweats". The system provides a protective secondary line to catch any fluid and routes it to a safe location.

These fittings work with any ChemQuik coupling with fine thread flare terminations or a common flare style fitting. In addition, the panel mount version can be mounted into a pump cabinet or other panel mount connection point. The primary line can then be routed from the coupling directly to a pump, connected to a ChemQuik coupling at the panel mount fitting.

The "weep port" serves to vent the area between the primary and secondary lines so that pressure cannot build up in case of a primary line rupture. The leaking fluid can then be routed to a containment vessel or to a leak detector.

FLARE NUT	DESCRIPTION
CQDCNUT0612	Dual containment nut, 3/8" OD process line x 3/4" OD secondary containment line.
	Dual containment nut, 1/2" OD process line x 3/4" OD secondary containment line.

WARRANTY: All sales are subject to Colder Products Company's limited express warranty set forth in the CPC catalog. Contact your local distributor or CPC Customer Service for warranty provisions.

Warning: Due to the wide variety of possible fluid media and operating conditions, unintended consequences may result from the use of this product, all of which are beyond the control of CPC. It is the user's responsibility to carefully determine and test for compatibility for use with their application. All such risks shall be assumed by the buyer.

COPYRIGHT © 2021 BY COLDER PRODUCTS COMPANY. COLDER PRODUCTS COMPANY, COLDER PRODUCTS AND CPC ARE REGISTERED TRADEMARKS WITH THE US PATENT & TRADEMARK OFFICE